

## Acute *Brucella melitensis* M16 infection model in mice treated with tumor necrosis factor-alpha inhibitors

Murat Kutlu<sup>1</sup>, Çağrı Ergin<sup>2</sup>, Nilay Şen-Türk<sup>3</sup>, Selda Sayin-Kutlu<sup>1</sup>, Orçun Zorbozan<sup>2</sup>, Şerife Akalın<sup>1</sup>, Barboros Şahin<sup>4</sup>, Veli Çobankara<sup>5</sup>, Neşe Demirkan<sup>3</sup>

<sup>1</sup> Department of Infectious Diseases and Clinical Microbiology, Pamukkale University, Faculty of Medicine, Denizli, Turkey

<sup>2</sup> Department of Medical Microbiology, Pamukkale University, Faculty of Medicine, Denizli, Turkey

<sup>3</sup> Department of Pathology, Pamukkale University, Faculty of Medicine, Denizli, Turkey

<sup>4</sup> Animal Research Laboratory, Pamukkale University, Denizli, Turkey

<sup>5</sup> Department of Internal Medicine, Section of Rheumatology, Pamukkale University, Faculty of Medicine, Denizli, Turkey

### Abstract

**Introduction:** There is limited data in the literature about brucellosis related to an intracellular pathogen and anti-tumor necrosis factor alpha (anti-TNF $\alpha$ ) medication. The aim of this study was to evaluate acute *Brucella* infections in mice receiving anti-TNF $\alpha$  drug treatment.

**Methodology:** Anti-TNF $\alpha$  drugs were injected in mice on the first and fifth days of the study, after which the mice were infected with *B. melitensis* M16 strain. Mice were sacrificed on the fourteenth day after infection. Bacterial loads in the liver and spleen were defined, and histopathological changes were evaluated.

**Results:** Neither the liver nor the spleen showed an increased bacterial load in all anti-TNF $\alpha$  drug groups when compared to a non-treated, infected group. The most significant histopathological findings were neutrophil infiltrations in the red pulp of the spleen and apoptotic cells with hepatocellular pleomorphism in the liver. There was no significant difference among the groups in terms of previously reported histopathological findings, such as extramedullary hematopoiesis and granuloma formation.

**Conclusions:** There were no differences in hepatic and splenic bacterial load and granuloma formation, which indicate worsening of the acute *Brucella* infection in mice; in other words, anti-TNF $\alpha$  treatment did not exacerbate the acute *Brucella* spp. infection in mice.

**Key words:** experimental brucellosis; anti-TNF-alpha drug; etanercept; infliximab.

*J Infect Dev Ctries* 2015; 9(2):141-148. doi:10.3855/jidc.5155

(Received 21 April 2014 – Accepted 09 September 2014)

Copyright © 2015 Kutlu *et al.* This is an open-access article distributed under the Creative Commons Attribution License, which permits unrestricted use, distribution, and reproduction in any medium, provided the original work is properly cited.

### Introduction

Anti-tumor necrosis factor alpha (TNF $\alpha$ ) drugs are widely used for rheumatoid arthritis, ankylosing spondylitis, inflammatory bowel disease, psoriasis, psoriatic arthritis, and juvenile chronic arthritis. However, anti-TNF $\alpha$  drug therapy is associated with increased risk of infection, including non-typhoidal salmonellosis, listeriosis, pneumocystosis, and other fungal or viral infections, but *Mycobacterium tuberculosis* infection incidence is especially increased in patients who are treated with these drugs [1,2].

Brucellosis is still endemic in some parts of the world, and approximately 500,000 new cases are reported annually [3]. *Brucella* spp. are intracellular bacteria that release cytokines such as IFN-gamma, IL-2, and TNF $\alpha$ . Activated macrophages and dendritic cells are required for the immune response against

*Brucella* infection [4-6]. TNF $\alpha$  has a critical role in macrophage activation, apoptosis, proinflammatory cytokine release, and granuloma formation. It is required for bactericidal effects and clearance of *Brucella* infection [7-9]. Although it was reported that TNF $\alpha$  was not secreted by mouse macrophages infected with *B. melitensis* [10], TNF $\alpha$  gene expression and induction was demonstrated in *in vitro* and *in vivo* studies conducted with mice macrophage, splenocyte, and dendritic cells [11-13]. Additionally, the increased TNF $\alpha$  serum level was shown with *B. abortus* infection, but not with *B. melitensis* [14]. Although brucellosis is an endemic disease and there is a widespread use of anti-TNF $\alpha$  drugs for different indications, reactivation of brucellosis can be expected more frequently. However, there are only three case reports about brucellosis reactivation due to anti-TNF $\alpha$

drug therapy [15-17]. In this study, we aimed to investigate the responses to acute *Brucella* infection in mice receiving adalimumab (ADA), etanercept (ETN), and infliximab (IFX) by evaluating the splenic and hepatic bacterial loads as well as histopathological findings.

## Methodology

### *Bacteria*

This study used a standard smooth strain of *B. melitensis* provided by the Pendik Veterinary Control and Research Institute in Istanbul, Turkey. Lyophilized bacteria were suspended in phosphate buffered saline (PBS) and cultured on horse blood agar (HBA) plates for three days at 37°C with 5% CO<sub>2</sub>.

### *Animals, infections, and anti-TNF $\alpha$ drugs*

The study was carried out according to the ethical guidelines (no. 2011.035) of the Medical Ethics Committee of Pamukkale University, Denizli, Turkey. A total of 56 BALB/c mice between eight and ten weeks of age, weighing between 30 and 40 grams, were included in the study. During the experiment period, six mice were excluded from the analysis due to preterm death. The control groups (CG) (non-infected-CG, n = 6; infected-CG, n = 7) and following test groups were examined: ADA (adalimumab, n = 6); ADA + *B. melitensis* (adalimumab with acute *B. melitensis* infection, n = 6); ETN (etanercept, n = 6); ETN + *B. melitensis* (etanercept with acute *B. melitensis* infection, n = 7); IFX (infliximab, n = 6); and IFX + *B. melitensis* (infliximab with acute *B. melitensis* infection, n = 6).

On days 1 and 5 of the experiment period, drugs were administered subcutaneously to the ADA (2 mg/kg), ETN (0.4 mg/kg), and IFX (10 mg/kg) groups, while 100  $\mu$ L PBS injections were given to the control group. The aim of this study was to evaluate acute *Brucella* infection in mice receiving anti-TNF $\alpha$  drug treatment, so a pre-infection regime was preferred, and the treatment was repeatedly performed as in previous studies [18-20]. Test groups were intraperitoneally inoculated with  $4 \times 10^4$  colony-forming units (cfu) of *B. melitensis* M16 strain on day 5. Optimal doses were described by previous studies for virulent *Brucella*, and in this study, the infective dose was administered as in some other studies on a *B. melitensis* model [11,13,21].

### *Measurement of bacterial load in liver and spleen*

On day 19 (the 14<sup>th</sup> day of infection), the spleen and liver were aseptically removed, weighed, and

placed in sterile Petri dishes with 10 mL of saline. The organs were homogenized for quantitative bacterial load by mincing them with two no. 15 scalpels and homogenizing by pushing them through the mesh with a sterile syringe plunger. Aliquots of 0.1 mL spleen and liver homogenate samples were diluted tenfold serially in PBS. Next, 100  $\mu$ L homogenates of each dilution were cultured on HBA plates at 37°C with 5% CO<sub>2</sub> for five days. The quantitative bacterial load of each sample was determined by log conversion.

### *Histopathology*

Tissue samples of the spleen and liver taken from each mouse were fixed in 10% buffered formalin placed in paraffin blocks, sectioned at 5  $\mu$ m, and stained with haematoxylin and eosin for histological evaluation. Two pathologists performed a blinded evaluation of histopathological changes in the spleen and liver, using the following histopathological evaluation criteria:

#### Spleen

Granuloma – 0: absent, 1: micro granuloma, 2: macro granuloma; extramedullary hematopoiesis – 0: absent, 1: mild, 2: moderate, 3: severe; lymphoid tissue depletion – 0: absent, 1: mild, 2: moderate, 3: severe; neutrophil infiltration in the red pulp – 0: absent, 1: present.

#### Liver

Granuloma – 0: absent, 1: micro granuloma, 2: macro granuloma; extramedullary hematopoiesis – 0: absent, 1: mild, 2: moderate, 3: severe; apoptotic cells – 0: absent/minimal, 1: present; portal inflammation – 0: absent, 1: mild, 2: moderate, 3: severe; perivascular mononuclear infiltration – 0: absent, 1: present; Kupffer cell hyperplasia – 0: absent, 1: mild, 2: moderate, 3: severe; and hepatocellular pleomorphism – 0: absent, 1: present.

### *Statistical analysis*

The statistical analysis was carried out using SPSS software version 17. The bacterial load in the spleen and liver were analyzed using the Mann-Whitney *U* test (two group comparison) and the Kruskal-Wallis test (multi group comparison). The histopathological findings of the spleen and liver were analyzed by the Chi-square and Kruskal-Wallis tests. Statistical significance was set at  $p < 0.05$ .

**Results**

*Quantitative spleen bacterial load*

Bacterial growth was observed in spleen tissue cultures of all infected mice. The lowest bacteria number was in the ETN + *B. melitensis* group, while the highest was in the IFX + *B. melitensis* group (Figure 1). There was no difference in quantitative splenic bacterial load between the groups receiving infected-CG and anti-TNF $\alpha$ . The IFX + *B. melitensis* group had a higher bacterial load when compared to the ETN + *B. melitensis* and ADA + *B. melitensis* groups ( $p = 0.010$  and  $p = 0.025$ , respectively).

*Quantitative liver bacterial load*

There was bacterial growth in the majority of hepatic tissue cultures except in two mice in the ETN + *B. melitensis* group. These two subjects were not excluded from the analysis, because both demonstrated bacterial growth in the spleen and histopathological changes in the liver and spleen. Bacterial load was lower in the ETN + *B. melitensis* group than in the infected-CG, ADA + *B. melitensis*, and IFX + *B. melitensis* groups, and there was a significant difference between the ETN + *B. melitensis* and infected-CG groups ( $p = 0.025$ ) (Figure 2).

*Spleen histopathology*

Extramedullary hematopoiesis was determined in all infected samples, but there was no significant difference between the scores of the groups. Granuloma formation was detected in 19 samples (73%), and there was no significant difference in granuloma formation and lymphoid tissue changes between the groups (Table 1). Neutrophil infiltration

in the red pulp was more prominent in the groups that were administered anti-TNF $\alpha$ , and there was a statistically significant difference between the ADA + *B. melitensis* and infected-CG groups ( $p = 0.026$ ) (Figure 3).

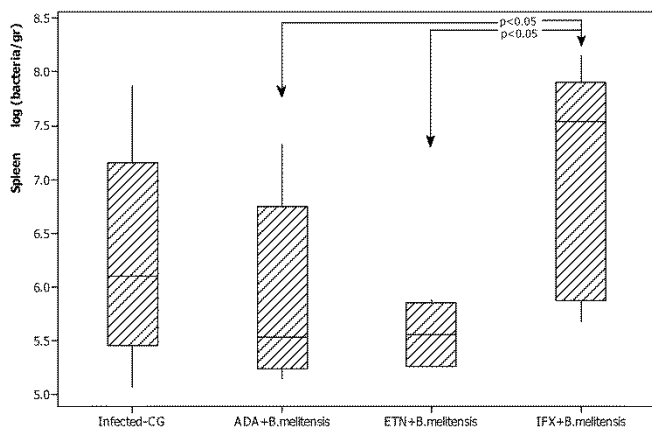
*Liver histopathology*

Although granuloma was determined in all samples, extramedullary hematopoiesis was detected in only 13 samples (50%). There was no significant difference in terms of granuloma formation, extramedullary hematopoiesis, portal inflammation, perivascular mononuclear infiltration, and Kupffer cell hyperplasia between the groups (Table 1). Hepatocellular pleomorphism was more prominent in the IFX + *B. melitensis* group than in the infected-CG group ( $p = 0.026$ ) (Figure 4). Additionally, apoptotic cells in the IFX + *B. melitensis* group were more distinctive than in the infected-CG, ADA + *B. melitensis*, and ETN + *B. melitensis* groups ( $p = 0.026$ ,  $p = 0.046$ , and  $p = 0.067$ , respectively) (Figure 5).

**Discussion**

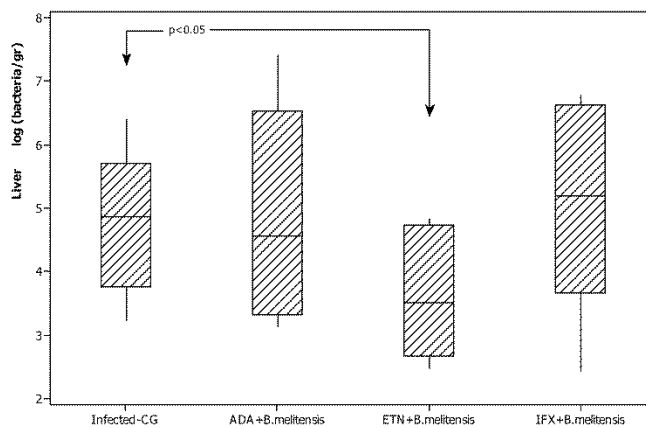
The results of this study revealed that there was no significant increase in splenic and hepatic bacterial load during acute *B. melitensis* infection in mice resulting from anti-TNF $\alpha$  drug treatment. Previously, it was shown that TNF $\alpha$  was required for bacterial clearance in a mouse model of brucellosis [7]. Furthermore, splenic bacterial load was increased during acute *Brucella* infection in both TNF $\alpha$  gene deficient mice and mice receiving anti-TNF $\alpha$  monoclonal antibody [22,23].

**Figure 1.** Comparisons of the groups are shown in terms of the spleen tissue bacterial load. Values are mean  $\pm$  standard error of mean (SEM)



\* $p < 0.05$  vs. ADA + *B. melitensis*, ETN + *B. melitensis* by Mann-Whitney *U* test

**Figure 2.** Comparisons of the groups are shown in terms of the liver tissue bacterial load. Values are mean  $\pm$  standard error of mean (SEM)



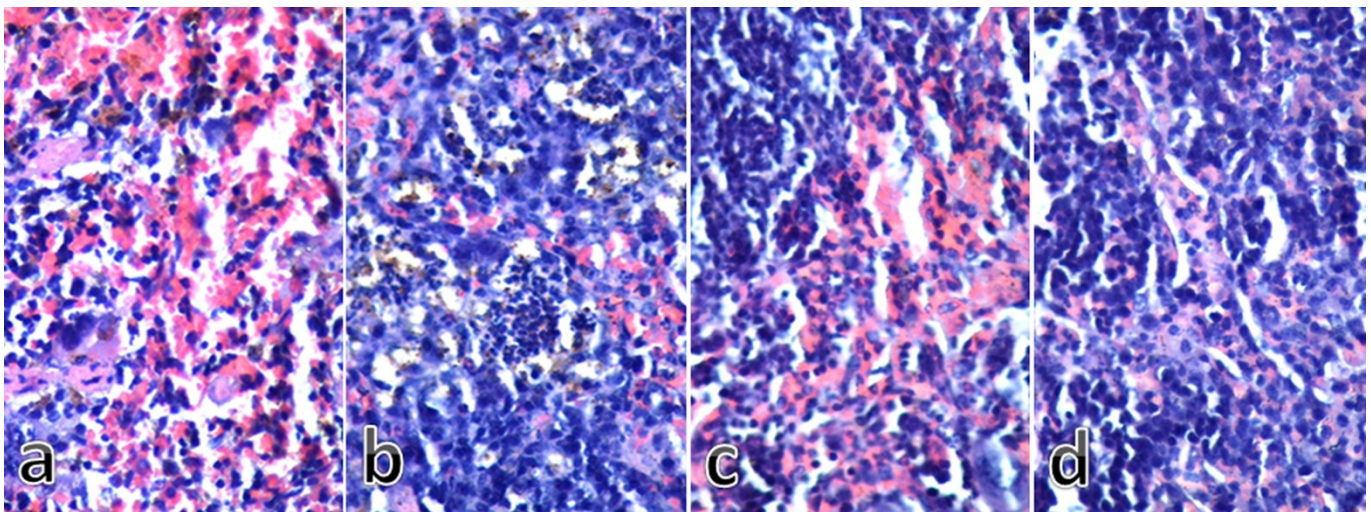
\* $p < 0.05$  vs. ETN + *B. melitensis* by the Mann-Whitney *U* test



**Table 1.** Histopathological findings of acute *Brucella melitensis* M16 infection in mice treated with anti tumor necrosis factor-alpha drugs

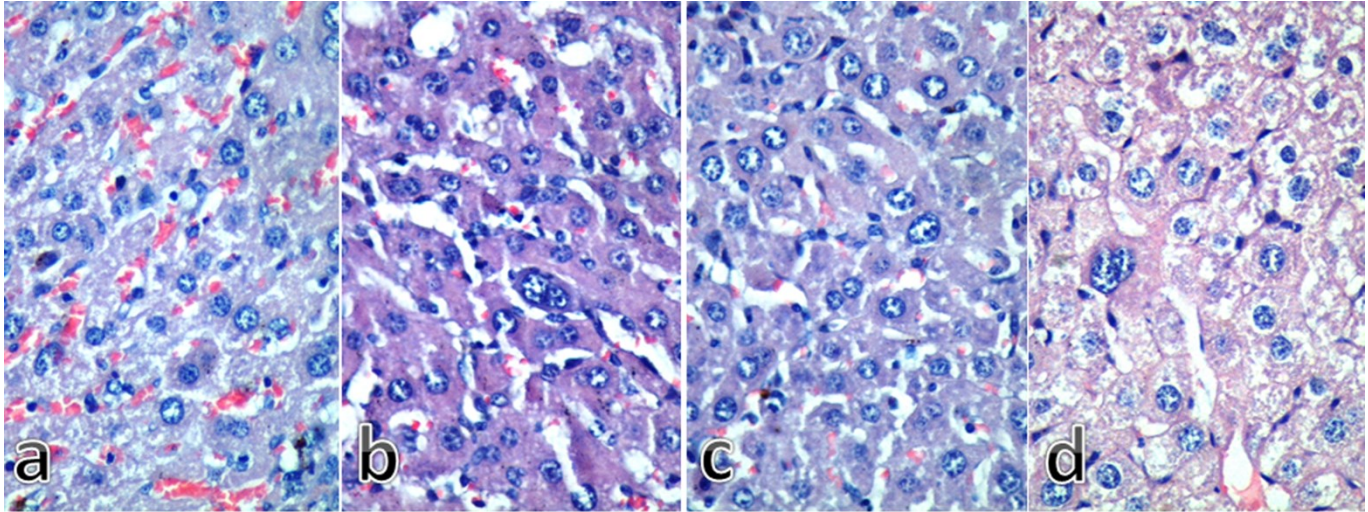
Organ, pathological findings	Infected-CG (n = 7)	ADA + <i>B. melitensis</i> (n = 6)	ETN + <i>B. melitensis</i> (n = 7)	IFX + <i>B. melitensis</i> (n = 6)	P
<b>Spleen</b>					
Granuloma mean grade (SEM)	1.14 (0.34)	1.67 (0.61)	1.14 (0.40)	1.17 (0.30)	.257
Extramedullary hematopoiesis, mean grade (SEM)	0.57 (0.37)	1.17 (0.40)	1.29 (0.47)	2.0 (0.4)	.242
Lymphoid tissue depletion, mean grade (SEM)	1.71 (0.5)	2.17 (0.4)	1.43 (0.2)	2.5 (0.34)	.209
Neutrophil infiltration in the red pulp (present/absent)	3/4	6/0*	5/2	5/1	.122
<b>Liver</b>					
Granuloma, mean grade (SEM)	2.71 (0.28)	2.33 (0.33)	1.71 (0.36)	2.67 (0.33)	.122
Extramedullary hematopoiesis, mean grade (SEM)	0.57 (0.37)	1.17 (0.40)	1.29 (0.47)	1.17 (0.54)	.651
Apoptotic cells (present/absent)	3/4	3/3	3/4	6/0**	.159
Portal inflammation, mean grade (SEM)	1.43 (0.36)	0.67 (0.33)	1.57 (0.42)	1 (0.36)	.369
Perivascular mononuclear infiltration (present/absent)	4/3	1/5	5/2	2/4	.201
Kupffer cell hyperplasia, mean grade (SEM)	1.86 (0.34)	2.0 (0.51)	1.71 (0.36)	2.67 (0.21)	.256
Hepatocellular pleomorphism (present/absent)	3/4	5/1	6/1	6/0***	.078

SEM: standard error of mean

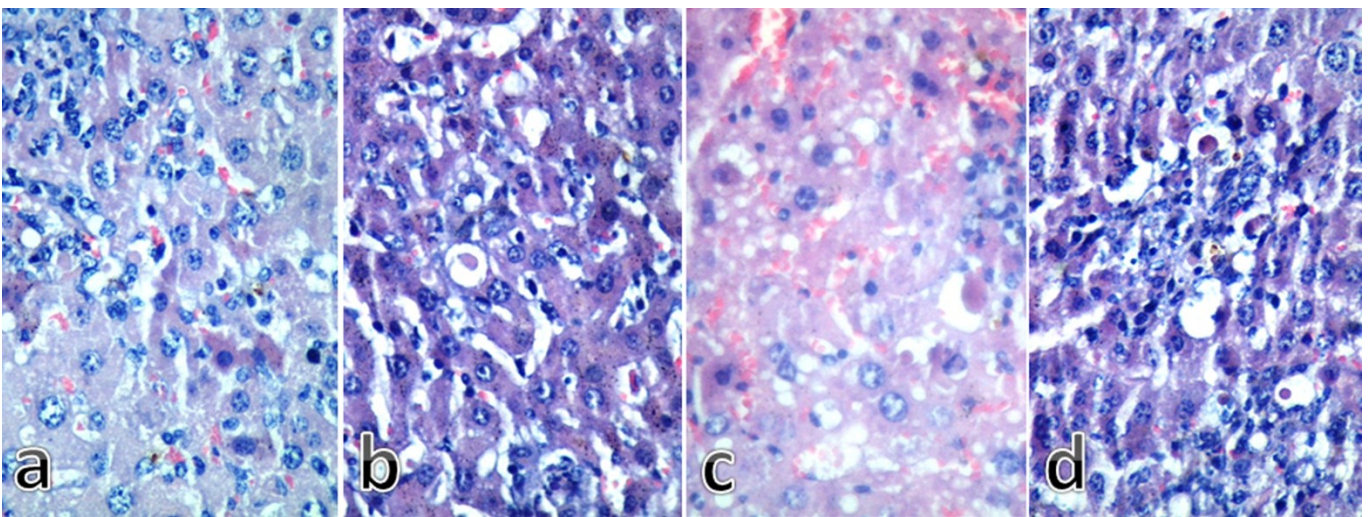
\*p < 0.05 vs. infected-CG; \*\*p < 0.05 vs. infected-CG and ADA + *B. melitensis* group; \*\*\*p < 0.05 vs. infected-CG**Figure 3.** Neutrophil infiltration in the spleen red pulp: **a)** infected-CG group; **b)** ADA + *B. melitensis* group; **c)** ETN + *B. melitensis* group; **d)** IFX + *B. melitensis* group (H&E, x400 magnification)



**Figure 4.** Hepatocellular pleomorphism in the liver: **a)** infected-CG group; **b)** ADA + *B. melitensis* group; **c)** ETN + *B. melitensis* group; **d)** IFX + *B. melitensis* group (H&E, x400 magnification)



**Figure 5.** Apoptotic cells in the liver: **a)** infected-CG group; **b)** ADA + *B. melitensis* group; **c)** ETN + *B. melitensis* group; **d)** IFX + *B. melitensis* group (H&E, x400 magnification)



The reason our findings differed from those of previous reports may be the administration of anti-TNF $\alpha$  drugs used in daily medical practice.

In the present study, there was no higher bacterial load in groups receiving anti-TNF $\alpha$  drugs when compared to the control group, but some findings are still worthy of note.

First, hepatic bacterial load was lower in the ETN + *B. melitensis* group than in the infected-CG group ( $p = 0.025$ ). Previous studies showed that TNF $\alpha$  stimulation of the hepatocytes of mice leads to TLR 2 and TLR 4 up-regulation, whereas TNF $\alpha$  blockage leads to their down-regulation [24]. In a recent study, it was reported that TLR 2 and 4 did not have a role in controlling hepatic infection in a mouse model of *B. melitensis*, and hepatic bacterial clearance started in TLR 2 and TLR 4 of knock-out mice after the second week of infection [25]. However, in the spleen, it was shown that TLR 4, but not TLR 2, was required to control *Brucella* infection [13,25,26]. These data may explain the lower hepatic bacterial load in the ETN + *B. melitensis* group as well as the absence of bacterial growth in two liver samples. However, TLR 4 is required for bacterial clearance in the spleen, and therefore splenic bacterial load was unchanged. Another factor influencing this result may be related to ineffectiveness of etanercept on the events related to the p55 receptor, unlike other drugs [27].

Second, splenic bacterial loads of the experiment groups are shown in Figure 1. In the IFX + *B. melitensis* group, the splenic bacterial load was significantly higher than the other two drug groups; however, none of the drug groups demonstrated a splenic bacterial load different from the control group. IFX is a human-mouse chimeric TNF $\alpha$  inhibitor, and it exerts its potential effect by binding both to soluble TNF $\alpha$  and transmembranal TNF $\alpha$ . Structural and pharmacological differences of the drugs may play a role in detecting higher bacterial load in the IFX + *B. melitensis* group than the other two drug groups [27]. As mentioned earlier, TLR 4 is essential for splenic bacterial clearance, and anti-TNF $\alpha$  drugs inhibit the expression of TLR 4 and TLR 2. It has been demonstrated that IFX and ETN have similar inhibitory effects on TLR 4 or TLR 2 expression in human synovial tissue [28]. However, there is no clear evidence about the altering effects of these drugs on TLR 2 and TLR 4 activities in mice. The drugs used in this study were previously administered for TNF $\alpha$  blockage in mouse models; it has been demonstrated that they lead to a decrease in TNF $\alpha$  levels in serum [29]. However, there is no clear information about the

dosing of these drugs in mice; therefore, we administered the doses applied for humans. In addition to this, drug doses may influence the differences between the groups.

Third, the histopathological evidence is critical. In the present study, extramedullary hematopoiesis was detected in spleen samples of mice infected with *B. melitensis* M16, and granuloma formation was detected in the majority (19/26; 73%) of them. It was previously reported that those two changes were the main signs in the spleen of the *B. melitensis* M16 mouse model [30]. Our results revealed that there was granuloma formation in all liver samples, and extramedullary hematopoiesis was encountered in 50% of the subjects. To date, we are not aware of a study investigating effects of TNF $\alpha$  neutralization on granuloma formation during *Brucella* infection. In one study, there was no significant difference in terms of granuloma formation between IL-10 knock-out mice in a *B. abortus* infection model and wild-type mice, even though higher TNF $\alpha$  levels were detected in the second week of infection [4]. The results of our study revealed that anti-TNF $\alpha$  drug use did not have any effect on granuloma formation either in the spleen or liver. This was also demonstrated in a *M. tuberculosis* mouse model [31].

In all anti-TNF $\alpha$  drug groups, there was neutrophil infiltration in the red pulp, but this difference reached statistical significance only in the ADA + *B. melitensis* group. In liver samples, apoptotic cells and hepatocyte pleomorphism were more prominent in the IFX + *B. melitensis* group. There are conflicting data about the hepatic effects of anti-TNF $\alpha$  drugs. In some patients, hepatotoxicity can develop due to IFX administration [32]. When the treatment was changed with ETN or ADA, hepatotoxicity disappeared in some patients who received IFX previously [33,34]. On the other hand, TNF $\alpha$  blockage was associated with the hepatoprotective effect in some conditions in mice models [35,36]. Another study reported that IFX treatment can control chronic hepatitis C infections by promoting apoptotic cells and preventing liver regeneration in a transgenic mouse model [37]. In our study, the detection of apoptotic cells and hepatocyte pleomorphism in the IFX + *B. melitensis* group, but not in the sham group, may indicate an altered response against *Brucella* infection.

Using a mouse model to investigate the effects of anti-TNF $\alpha$  treatment in human brucellosis is the major limitation of our study; ethical restrictions make it impossible to conduct such a study on humans. Still, the critical role of TNF $\alpha$  on disease control is well



known for mouse brucellosis, allowing an argument from analogy with human brucellosis. It was shown *in vitro* that there was no TNF $\alpha$  production in human macrophages and dendritic cells after some *Brucella* spp. infections [38-40]. Some studies also reported that TNF $\alpha$  was absent or was not increased in human brucellosis [41,42]. In spite of these findings, Demirdag *et al.* reported that TNF $\alpha$  increased in human brucellosis and it was correlated with other inflammatory parameters such as C-reactive protein during the disease follow-up [5]. That study also showed that high TNF $\alpha$  levels were decreased by brucellosis treatment. A recently published study reported results similar to those of Demirdag *et al.* [6].

## Conclusions

Our results showed that anti-TNF $\alpha$  treatment was not associated with any difference in signs indicating disease severity, such as increased hepatic and splenic bacterial loads, granuloma formation, and extramedullary hematopoiesis in acute *Brucella* infection in mice. In order to safely use anti-TNF $\alpha$  drugs, we need to know whether there is a change in the prognosis or a reactivation of *Brucella* infection in the long term. Therefore, further studies are required to reveal the effects of anti-TNF $\alpha$  drugs on chronic *Brucella* infections and to follow the potential complications of anti-TNF $\alpha$  treatment, such as brucellosis reactivation, especially in endemic areas.

## References

- Dixon WG, Watson K, Lunt M, Hyrich KL, Silman AJ, Symmons DP; British Society for Rheumatology Biologics Register (2006) Rates of serious infection, including site-specific and bacterial intracellular infection, in rheumatoid arthritis patients receiving anti-tumor necrosis factor therapy: results from the British Society for Rheumatology Biologics Register. *Arthritis Rheum* 54: 2368-2376.
- Ali T, Kaitha S, Mahmood S, Ftesi A, Stone J, Bronze MS (2013) Clinical use of anti-TNF therapy and increased risk of infections. *Drug Healthc Patient Saf* 5: 79-99.
- Seleem MN, Boyle SM, Sriranganathan N (2010) Brucellosis: a re-emerging zoonosis. *Vet Microbiol* 140: 392-398.
- Corsetti PP, de Almeida LA, Carvalho NB, Azevedo V, Silva TM, Teixeira HC, Faria AC, Oliveira SC (2013) Lack of endogenous IL-10 enhances production of proinflammatory cytokines and leads to *Brucella abortus* clearance in mice. *PLoS One* 8: e74729.
- Demirdag K, Ozden M, Kalkan A, Godekmerdan A, Kilic SS (2003) Serum cytokine levels in patients with acute brucellosis and their relation to the traditional inflammatory markers. *FEMS Immunol Med Microbiol* 39: 149-153.
- Rodriguez- Zapata M, Matías MJ, Prieto A, Jonde MA, Monserrat J, Sánchez L Reyes E, De la Hera A, Alvarez-Mon M (2010) Human brucellosis is characterized by an intense Th1 profile associated with a defective monocyte function. *Infect Immun* 78: 3272-3279.
- Jiang X, Leonard B, Benson R, Baldwin CL (1993) Macrophage control of *Brucella abortus*: role of reactive oxygen intermediates and nitric oxide. *Cell Immunol* 151: 309-319.
- Dornand J, Gross A, Lafont V, Liautard J, Oliaro J, Liautard JP (2002) The innate immune response against *Brucella* in humans. *Vet Microbiol* 90: 383-394.
- Skendros P, Pappas G, Boura P (2011) Cell-mediated immunity in human brucellosis. *Microbes Infect* 13: 134-142.
- Jiménez de Bagüés MP, Terraza A, Gross A, Dornand J (2004) Different responses of macrophages to smooth and rough *Brucella* spp.: relationship to virulence. *Infect Immun* 72: 2429-2433.
- Guilloteau LA, Dornand J, Gross A, Olivier M, Cortade F, Vern YL, Kerboeuf D (2003) Nramp1 is not a major determinant in the control of *Brucella melitensis* infection in mice. *Infect Immun* 71: 621-628.
- He Y, Reichow S, Ramamoorthy S, Ding X, Lathigra R, Craig JC, Sobral BW, Schurig GG, Sriranganathan N, Boyle SM (2006) *Brucella melitensis* triggers time-dependent modulation of apoptosis and down-regulation of mitochondrion-associated gene expression in mouse macrophages. *Infect Immun* 74: 5035-5046.
- Copin R, De Baetselier P, Carlier Y, Letesson JJ, Muraille E (2007) MyD88-dependent activation of B220-CD11b+LY-6C+ dendritic cells during *Brucella melitensis* infection. *J Immunol* 178: 5182-5191.
- Gu W, Wang X, Qiu H, Cui B, Zhao S, Zheng H, Xiao Y, Liang J, Duan R, Jing H (2013) Comparison of cytokine immune responses to *Brucella abortus* and *Yersinia enterocolitica* serotype O:9 infections in BALB/c mice. *Infect Immun* 81: 4392-4398.
- Jiménez FG, Colmenero JD, Irigoyen MV (2005) Reactivation of brucellosis after treatment with infliximab in a patient with rheumatoid arthritis. *J Infect* 50: 370-371.
- Papagoras CE, Argyropoulou MI, Voulgari PV, Vrabie I, Zikou AK, Drosos AA (2009) A case of *Brucella* spondylitis in a patient with psoriatic arthritis receiving infliximab. *Clin Exp Rheumatol* 27: 124-127.
- Akgul O, Ozgocmen S (2011) Infliximab and brucellosis: not the usual suspects, this time. *Mod Rheumatol* 21: 313-315.
- van Diepen A, Martina CA, Flierman R, Janssen R, van Dissel JT (2007) Treatment with anti-TNF alpha does not induce reactivation of latent *Salmonella enterica* serovar Typhimurium infection in C3H/HeN mice. *Scand J Immunol* 65: 407-411.
- Fei Y, Wang W, Kwiecinski J, Josefsson E, Pullerits R, Jonsson IM, Magnusson M, Jin T (2011) The combination of a tumor necrosis factor inhibitor and antibiotic alleviates staphylococcal arthritis and sepsis in mice. *J Infect Dis* 204: 348-357.
- Zaid A, Rulli NE, Rolph MS, Suhrbier A, Mahalingam S (2011) Disease exacerbation by etanercept in a mouse model of alphaviral arthritis and myositis. *Arthritis Rheum* 63: 488-491.
- Grilló MJ, Blasco JM, Gorvel JP, Moriyón I, Moreno E (2013) What have we learned from brucellosis in the mouse model? *Vet Res* 43: 29.
- Zhan Y, Cheers C (1998) Control of IL-12 and IFN- $\gamma$  production in response to live or dead bacteria by TNF and other factors. *J Immunol* 161: 1447-1453.

23. Murphy EA, Parent M, Sathiyasselan J, Jiang X, Baldwin CL (2001) Immune control of *Brucella abortus* 2308 infections in BALB/c mice. *FEMS Immunol Med Microbiol* 32: 85-88.
24. Radstake TR, Roelofs MF, Jenniskens YM, Oppers-Walgreen B, van Riel PL, Barrera P, Joosten LA, van den Berg WB (2004) Expression of toll-like receptors 2 and 4 in rheumatoid synovial tissue and regulation by proinflammatory cytokines interleukin-12 and interleukin-18 via interferon-gamma. *Arthritis Rheum* 50: 3856-3865.
25. Pei J, Ding X, Fan Y, Rice-Ficht A, Ficht TA (2012) Toll-like receptors are critical for clearance of *Brucella* and play different roles in development of adaptive immunity following aerosol challenge in mice. *Front Cell Infect Microbiol* 2: 115.
26. Campos MA, Rosinha GM, Almeida IC, Salgueiro XS, Jarvis BW, Splitter GA, Qureshi N, Bruna-Romero O, Gazzinelli RT, Oliveira SC (2004) Role of Toll-like receptor 4 in induction of cell-mediated immunity and resistance to *Brucella abortus* infection in mice. *Infect Immun* 72: 176-186.
27. Furst DE, Wallis R, Broder M, Beenhouwer DO (2006) Tumor necrosis factor antagonists: different kinetics and/or mechanisms of action may explain differences in the risk for developing granulomatous infection. *Semin Arthritis Rheum* 36: 159-167.
28. De Rycke L, Vandooren B, Kruihof E, De Keyser F, Veys EM, Baeten D (2005) Tumor necrosis factor alpha blockade treatment down-modulates the increased systemic and local expression of Toll-like receptor 2 and Toll-like receptor 4 in spondylarthropathy. *Arthritis Rheum* 52: 2146-2158.
29. Fries W, Muja C, Crisafulli C, Costantino G, Longo G, Cuzzocrea S, Mazzone E (2008) Infliximab and etanercept are equally effective in reducing enterocyte APOPTOSIS in experimental colitis. *Int J Med Sci* 5: 169-180.
30. Henning LN, Gillum KT, Fisher DA, Barnewall RE, Krile RT, Anderson MS, Ryan MJ, Warren RL (2012) The pathophysiology of inhalational brucellosis in BALB/c mice. *Sci Rep* 2: 495.
31. Chakravarty SD, Zhu G, Tsai MC, Mohan VP, Marino S, Kirschner DE, Huang L, Flynn J, Chan J (2008) Tumor necrosis factor blockade in chronic murine tuberculosis enhances granulomatous inflammation and disorganizes granulomas in the lungs. *Infect Immun* 76: 916-926.
32. Tobon GJ, Canas C, Jaller JJ, Restrepo JC, Anaya JM (2007) Serious liver disease induced by infliximab. *Clin Rheumatol* 26: 578-581.
33. Goldfeld DA, Verna EC, Lefkowitz J, Swaminath A (2011) Infliximab-induced autoimmune hepatitis with successful switch to adalimumab in a patient with Crohn's disease: the index case. *Dig Dis Sci* 56: 3386-3388.
34. Carlsen KM, Riis L, Madsen OR (2009) Toxic hepatitis induced by infliximab in a patient with rheumatoid arthritis with no relapse after switching to etanercept. *Clin Rheumatol* 28: 1001-1003.
35. Bahcecioglu IH, Koca SS, Poyrazoglu OK, Yalniz M, Ozercan IH, Ustundag B, Sahin K, Dagli AF, Isik A (2008) Hepatoprotective effect of infliximab, an anti-TNF-alpha agent, on carbon tetrachloride-induced hepatic fibrosis. *Inflammation* 31: 215-221.
36. Li J, Gong YM, Wu J, Wu WJ, Cai W (2012) Anti-tumor necrosis factor- $\alpha$  monoclonal antibody alleviates parenteral nutrition-associated liver disease in mice. *JPEN J Parenter Enteral Nutr* 36: 219-225.
37. Brenndörfer ED, Weiland M, Frelin L, Derk E, Ahlén G, Jiao J, Bode JG, Sällberg M (2010) Anti-tumor necrosis factor  $\alpha$  treatment promotes apoptosis and prevents liver regeneration in a transgenic mouse model of chronic hepatitis C. *Hepatology* 52: 1553-1563.
38. Caron E, Peyrard T, Köhler S, Cabane S, Liautard JP, Dornand J (1994) Live *Brucella* spp. fail to induce tumor necrosis factor alpha excretion upon infection of U937-derived phagocytes. *Infect Immun* 62: 5267-5274.
39. Jubier-Maurin V, Boigegrain RA, Cloeckaert A, Gross A, Alvarez-Martinez MT, Terraza A, Liautard J, Köhler S, Rouot B, Dornand J, Liautard JP (2001) Major outer membrane protein Omp25 of *Brucella suis* is involved in inhibition of tumor necrosis factor alpha production during infection of human macrophages. *Infect Immun* 69: 4823-4830.
40. Billard E, Dornand J, Gross A (2007) *Brucella suis* prevents human dendritic cell maturation and antigen presentation through regulation of tumor necrosis factor alpha secretion. *Infect Immun* 75: 4980-4989.
41. Ahmed K, Al-Matrouk KA, Martinez G, Oishi K, Rotimi VO, Nagatake T (1999) Increased serum levels of interferon-gamma and interleukin-12 during human brucellosis. *Am J Trop Med Hyg* 61: 425-457.
42. Refik M, Mehmet N, Durmaz R, Ersoy Y (2004) Cytokine profile and nitric oxide levels in sera from patients with brucellosis. *Braz J Med Biol Res* 37: 1659-1663.

### Corresponding author

Murat Kutlu  
 Pamukkale University Faculty of Medicine, Kinikli  
 20070, Denizli, Turkey  
 Phone: + 90 0258 4440728-ext. 5767  
 Fax: + 90 0258 213492  
 Email: muratkutlu72@yahoo.com

**Conflict of interests:** No conflict of interests is declared.